

# CARSON®

## Lighted RimFree™

### 2x LED Magnifier

Congratulations on selecting your new Carson LED Lighted Magnifier! In order to achieve optimum performance, please follow instructions for proper use and care.



# RM-95

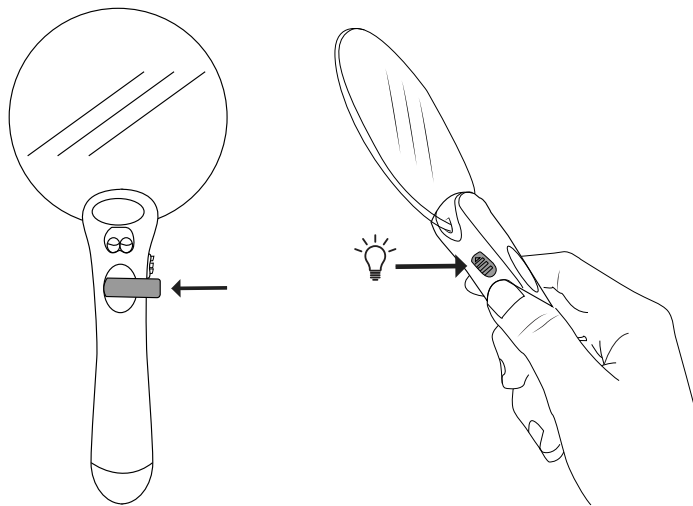
#### PRODUCT SPECIFICATION

Magnification:	2x	Dimensions:	3.5" x 1.0" x 8.1"
Lens Diameter:	90mm (3.5")	Batteries:	3 G10 Batteries (included)
Weight:	0.24 lbs	Accessories:	Protective Pouch

#### USING THE MAGNIFIER

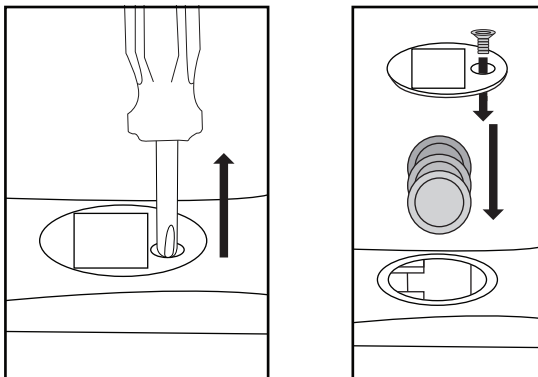
1. Remove battery tab to activate batteries.
2. Slide switch up to turn light on. Slide down to turn off.
3. Place magnifier over the object to be viewed.

**For Best Results:** Depending on your vision, you may need to move the magnifier closer or further away until object is in focus.



#### REPLACING BATTERIES

If LED light becomes dim, unscrew battery door and insert 3 new G10 button cell batteries in the correct polarity. Replace battery door and tighten with screwdriver.



**WARNING:** Batteries: Mixing old and new, different brands or types within brands may cause batteries to leak, overheat or explode. Keep away from fire or excessive heat. Inspect batteries for corrosion or leakage. Insert in direction indicated. Discard button cell batteries carefully. Keep button cell batteries away from children.

#### CARE

Clean using microfiber lens cloth. Do not use any abrasives, chemical cleaners, or solvents.

**Customer Service:** If you experience any difficulties, please contact us and we will be happy to help you.



✉ info@carson.com



✉ uksupport@carson.com



✉ eusupport@carson.com

For warranty information, visit [www.carson.com/warranty](http://www.carson.com/warranty)

[www.carson.com](http://www.carson.com)

Carson Optical 2070 5th Avenue, Ronkonkoma, NY 11779 | Tel: 631-963-5000